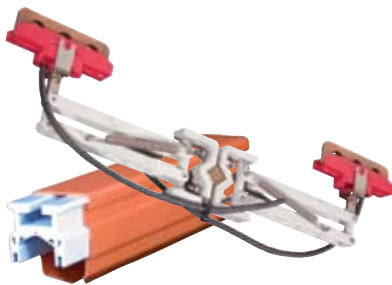




Hevi-Bar II Overview

The rugged Hevi-Bar II Conductor Bar System delivers reliable, high-capacity electrical performance. It is ideal for tough environments and demanding, heavy-use applications found in mills, heavy industry, storage yards, and transit systems. It is truly a "put it up once and forget it" system that will last for the life of your equipment.

UL Listed



Hevi-Bar II is ideal for:

- Medium to large cranes
- Bulk Handling Systems
- Mills and heavy industry
- Transit Systems
- Material Handling Equipment
- Other mobile power applications

Ampacity Selections: 500A, 700A, 1000A, and 1500A, at 600 volts.

Maximum Speed: 2000 feet per minute
(Contact the factory if higher speeds are needed)

Hevi-Bar II Features

- Uses surface area rather than mass to dissipate heat generated by high current conditions
- Can be mounted horizontally or vertically ("side entry")
- V-grooved for positive and accurate collector shoe tracking
- Has hardened, long-wearing and corrosion resistant stainless steel contact surface.
- Offers a choice of insulating covers:
 - Standard orange for indoor use
 - Green for the ground (bonding) conductor
 - Black UV-resistant for outdoor use
 - Medium or high heat versions to withstand higher ambient temperatures

Hevi Bar II is easy to install and maintain. For further information, please download the Hevi Bar II manual from our web site.

DURA-COAT Option - for Hevi-Bar II

Hevi-Bar II is available with our optional **DURA-COAT** finish, specially formulated for extremely corrosive environments. This coating combines a ceramic compound with an epoxy binder to provide superior corrosion resistance and adhesion to the base materials. The entire bar is coated, with the exception of the stainless steel running surface. The insulating cover is applied over the coating. All metal parts of the collector arm are coated.

DURA-COAT is ideal for galvanizing and electro-plating lines, chemical plants, smelters, foundries and cast houses, coke and ore handling cranes, and oxidizing/electro-winning facilities.

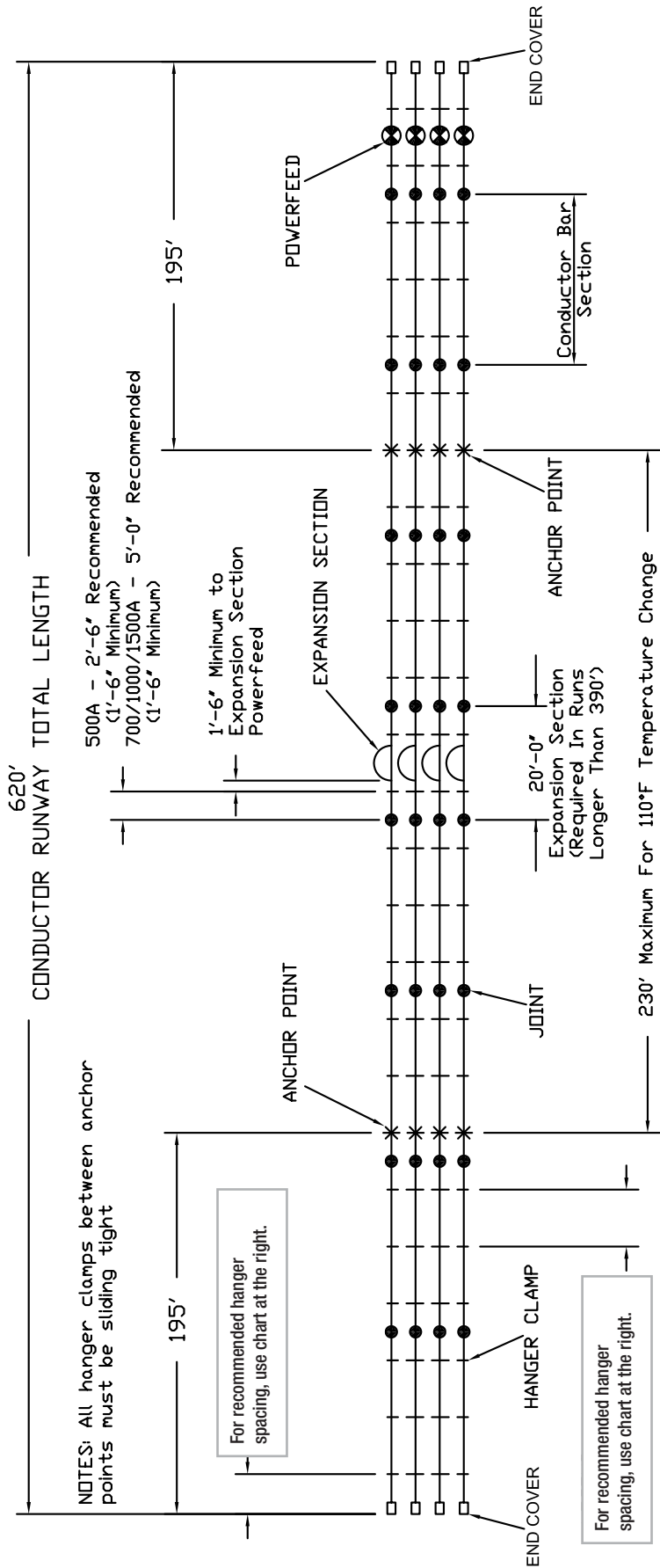
Contact Conductix-Wampfler for further information about **DURA-COAT**.

Toll Free: 1.888.822.2024
Email: info@ipandc.com

Fax: 1.519.822.2140
Web: www.ipandc.com

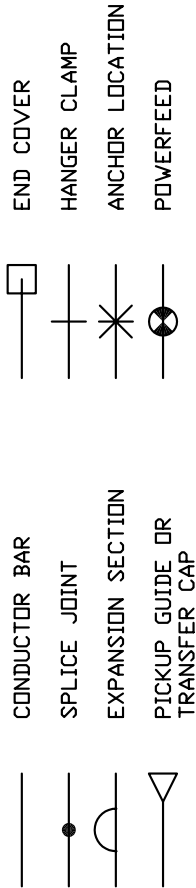
Hevi-Bar II Typical 4-Bar System

EXAMPLE OF 4 CONDUCTOR RUNWAY HEAVY BAR 2 (3 PHASE + 1 GROUND)



HANGER SPACING CHART

SYSTEM	FIRST HANGER	MAX.HANGER SPACING
500 AMP	2'-6"	5'-0"
700 AMP	3'-9"	7'-6"
1000 AMP	5'-0"	10'-0"
1500 AMP	5'-0"	10'-0"

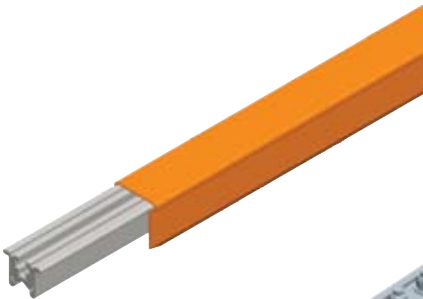


Hevi-Bar II - 500A Conductors

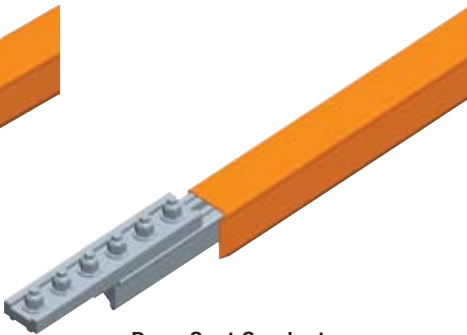
Standard Conductor Bar and Components

Type / Max Temp.	Use (Color)	Conductor Bar	Conductor Bar Cut Lgth (Specify 5 to 29 ft)	Expansion Section	Splice	Power Feed	Power Interrupting Section ♦	End Cover
PVC 160° F	Phase / Indoors (Orange)	27582	27583	37677	37676	37674	50746	27588
	Ground / Indoors (Green)	50258	50260	37677E	37676	37674	N/A	27588
	Phase & Ground / Outdoors UV Stable (Black)	38925	38926	38946	37676	37674	50746B	27588
Poly - carbonate 250°F	Phase & Ground / Indoors & Outdoors (Red)	32496	39225	32498	32499	32500	50747	27588
Wt lb (kg)		25.0 (11.34)	.81 lb/ft. (.112 kg/m)	30.0 (13.61)	1.5 (0.681)	4.0 (1.814)	45.0 (20.41)	1.0 (0.454)
Length ft (m)		30.0 (9.114)	*	30.0 (9.114)	/	/	30.0 (9.114)	/

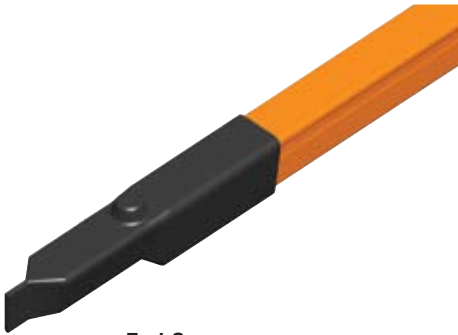
♦ See Appendix IV Pgs. 63-64.



Conductor Bar



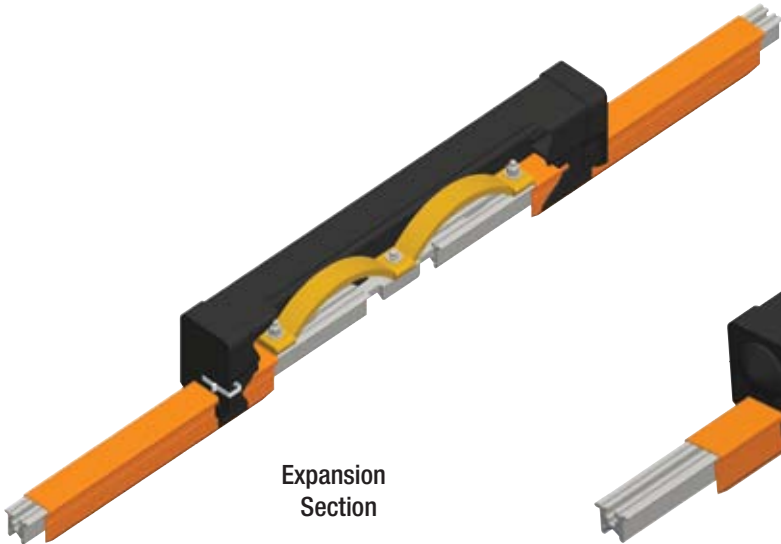
Dura-Coat Conductor Bar with Splice



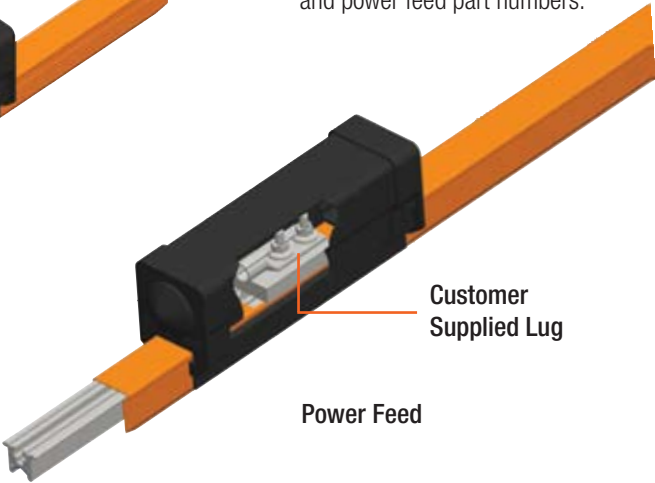
End Cover

Expansion Sections and Power Feed

Expansion Sections are required at all structural expansion joints and for all systems greater than 390 ft (118.87 m). See table above for expansion and power feed part numbers.



Expansion Section



Power Feed

Customer Supplied Lug

Hevi-Bar II - 500A DURA-COAT & Hangers

DURA-COAT Conductor Bar & Components

The ideal option for highly corrosive environments. Splices are pre-installed on Dura-Coat conductors.

Type / Max Temp.	Use (Color)	Conductor Bar	Conductor Bar Cut Lgth (Specify 5 to 29 ft)	Expansion Section	Splice Cover	Power Feed	Power Interrupting Section ♦	End Cover
PVC 160° F	Phase / Indoors (Orange)	39745-J	39747-J	39741-J	51304	37674	50749-J	27588
	Ground / Indoors (Green)	39745G-J	51861-J	39741G-J	51304	37674	N/A	27588
	Phase & Ground / Outdoors UV Stable (Black)	39745B-J	51367-J	39741B-J	51304	37674	50749B-J	27588
Poly-carbonate 250°F	Phase & Ground / Indoors & Outdoors (Red)	50731-J	51383-J	50741-J	51305	32500	50750-J	27588
Wt lb (kg)		25.0 (11.34)	0.81 lb/ft (0.1120 kg/m)	30.0 (13.61)	1.5 (0.68)	4.0 (1.81)	45.0 (20.41)	1.0 (0.454)
Length ft (m)		30.0 (9.144)	-	30.0 (9.144)	/	/	30.0 (9.144)	/

♦ See Appendix IV Pgs. 63-64.

Hangers

Hangers can be installed on brackets up to 3/8" thick (9.5mm). Hangers with cross bolts can be used as anchors.



Polycarbonate Snap-In

500 A Hangers	Plated Hardware	Stainless Steel Hardware	Wt lb (kg)
Polycarbonate Snap-In	26591	28368	0.30 (0.136)
Polycarbonate Snap-in w/Insulator	27483	27780	0.89 (0.404)
Stainless Steel Cross Bolt	27481	27788	0.59 (0.268)
Stainless Steel Cross Bolt w/Insulator	27482	29574	1.13 (0.513)



Polycarbonate Snap-in w/Insulator



Stainless Steel Cross Bolt



Stainless Steel Cross Bolt w/Insulator

Hevi-Bar II - 700A Conductors

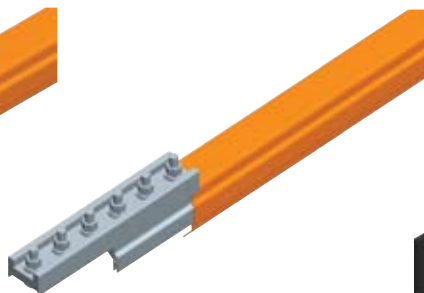
Standard Conductor Bar and Components

Type / Max Temp.	Use (Color)	Conductor Bar	Conductor Bar Cut Lgth (Specify 5 to 29 ft)	Expansion Section	Splice	Power Feed	Power Interrupting Section ♦	End Cover
PVC 160°F	Phase / Indoors (Orange)	24528	24529	24566	38115	38117	50748	50859
	Ground / Indoors (Green)	24528B	51369	24566B	38115	38117	N/A	50859
	Phase & Ground / Outdoors UV Stable (Black)	38934	38936	38949	38115	38117	50748B	50859
Poly Carbonate 250°F	Phase & Ground / Indoors & Outdoors (Red)	50733	51371	50738	38115C	50067	50752	50859
Fiberglass Reinforced Polyester 400°F	Phase & Ground / Indoors (Orange)	24554	24555	24567D	24558	24594	50754	24585
Wt lb (kg)		40.0 (18.14)	1.31 lb/ft (0.1811 kg/m)	50.0 (22.68)	3.0 (1.36)	5.0 (2.27)	70.0 (31.75)	2.0 (0.91)
Length ft (m)		30.0 (9.114)	*	15.0 (4.572)	/	/	30.0 (9.114)	/

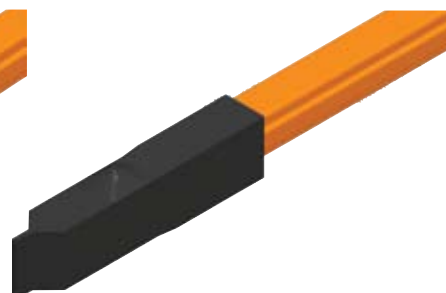
♦ See Appendix IV Pgs. 63-64.



Conductor Bar



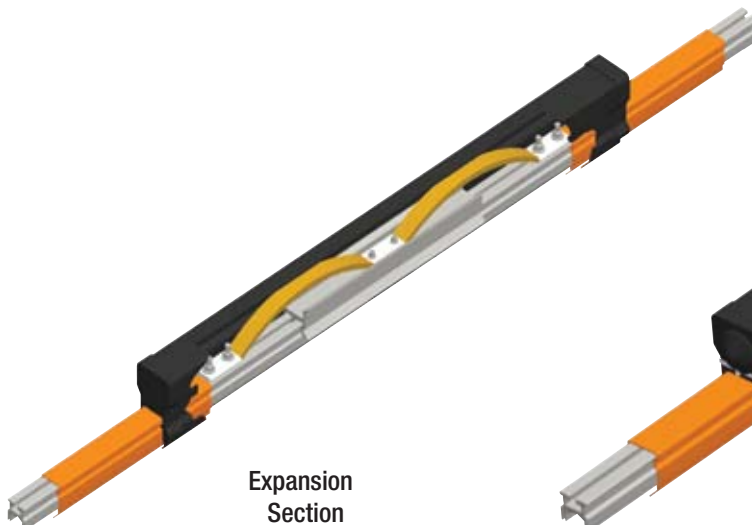
Dura-Coat Conductor Bar with Splice



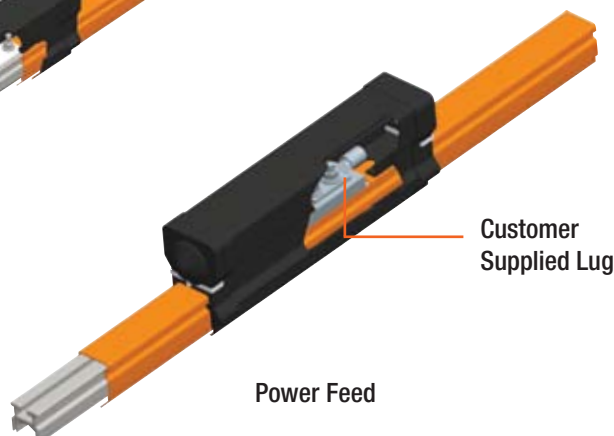
End Cover

Expansion Sections and Power Feed

Expansion Sections are required at all structural expansion joints and for all systems greater than 390 ft (118.87 m). See table above for expansion and power feed part numbers.



Expansion Section



Power Feed

Customer Supplied Lug

Hevi-Bar II - 700A DURA-COAT & Hangers

DURA-COAT Conductor Bar & Components

The ideal option for highly corrosive environments. Splices are pre-installed on Dura-Coat conductors.

Type / Max Temp.	Use (Color)	Conductor Bar	Conductor Bar Cut Lgth (Specify 5 to 29 ft)	Expansion Section	Splice Cover	Power Feed	Power Interrupting Section ♦	End Cover
PVC 160° F	Phase / Indoors (Orange)	39847-J	51372-J	50739-J	51320	38117	50751-J	50859
	Ground / Indoors (Green)	39847G-J	51862-J	50739B-J	51320	38117	N/A	50859
	Phase & Ground / Outdoors UV Stable (Black)	39847B-J	51376-J	50740-J	51320	38117	50751B-J	50859
Poly - carbonate 250°F	Phase & Ground / Indoors & Outdoors (Red)	50062-J	51374-J	50063-J	51321	50067	50753-J	50859
Wt lb (kg)		40.0 (18.14)	1.31 lb/ft (0.1811 kg/m)	50.0 (22.68)	3.0 (1.361)	5.0 (2.268)	70.0 (31.75)	2.0 (0.907)
Length ft (m)		30.0 (9.114)	-	15.0 (4.57)	1.5 (0.457)	1.5 (0.457)	30.0 (9.114)	1.5 (0.457)

♦ See Appendix IV Pgs. 63-64.

Hangers

Hangers can be installed on brackets up to 3/8" thick. Hangers with cross bolts can be used as anchors.



Polycarbonate Snap-In

700 A Hangers	Plated Hardware	Stainless Steel Hardware	High Temp.	Wt lb (kg)
Polycarbonate Snap-In	23223	28220	N/A	0.28 (0.127)
Polycarbonate Snap-in w/insulator	24902	24902B	N/A	0.87 (0.395)
Stainless Steel Cross Bolt	25986	28374	51972	0.61 (0.277)
Stainless Steel Cross Bolt w/insulator	51971	32807	24973	1.16 (0.526)



Polycarbonate Snap-in w/Insulator



Stainless Steel Cross Bolt



Stainless Steel Cross Bolt w/Insulator

Hevi-Bar II - 1000A Conductors

Standard Conductor Bar and Components

Type / Max Temp.	Use (Color)	Conductor Bar	Conductor Bar Cut Lgth (Specify 5 to 29 ft)	Expansion Section	Splice	Power Feed	Power Interrupting Section ♦	End Cover
PVC 160° F	Phase / Indoors (Orange)	23500	23503	23512	37746	38184	50755	33796B
	Phase & Ground / Outdoors UV Stable (Black)	23500D	38938	23512C	37746	38184	50755B	33796B
Poly - carbonate 250°F	Phase & Ground / Indoors & Outdoors (Red)	31991	51408	50941	31964	38184D	50756	33796B
Fiberglass Reinforced Polyester 400°F	Phase & Ground / Indoors (Orange)	23508	23511	23514	23520	23530	50757	23523
Wt (lb)		85 (38.56)	2.8 lb/ft (.3871 kg/m)	70 (31.75)	3.5 (1.588)	6.5 (2.948)	105 (47.63)	1.5 (0.680)
Length (ft.)		30	-	20.0	/	/	30.0	/

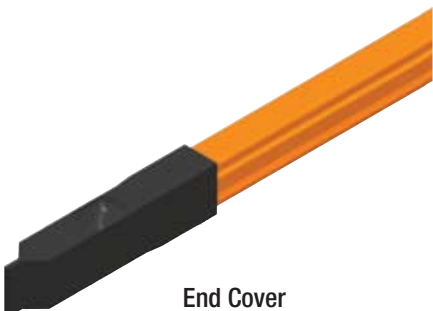
♦ See Appendix IV Pg. 63-64.



Conductor Bar



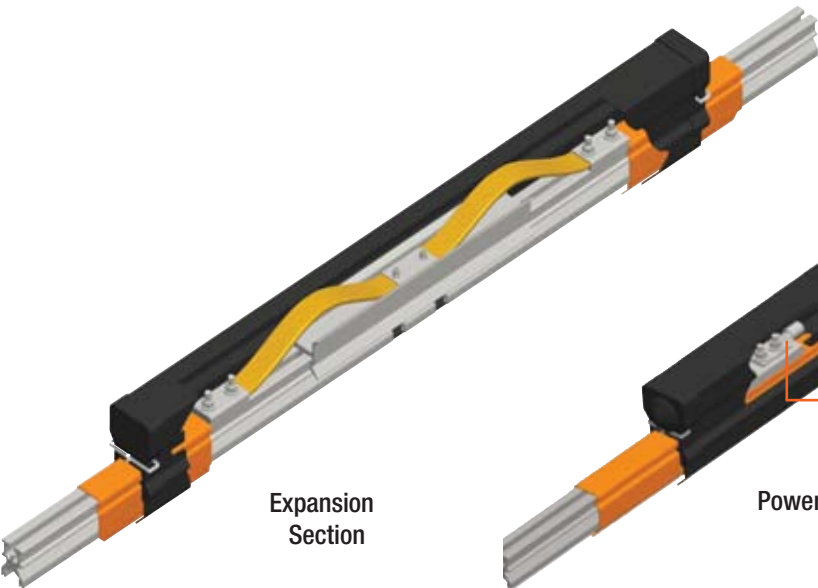
Dura-Coat Conductor Bar with Splice



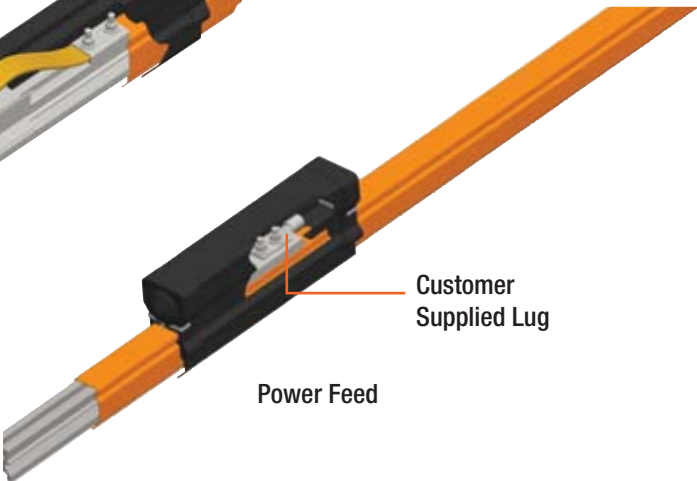
End Cover

Expansion Sections and Power Feed

Expansion Sections are required at all structural expansion joints and for all systems greater than 390 ft (118.87 m). See table above for expansion and power feed part numbers.



Expansion Section



Power Feed

Hevi-Bar II - 1000A DURA-COAT & Hangers

DURA-COAT Conductor Bar & Components

The ideal option for highly corrosive environments. Splices are pre-installed on Dura-Coat conductors.

Type / Max Temp.	Use (Color)	Conductor Bar	Conductor Bar Cut Lgth (Specify 5 to 29 ft)	Expansion Section	Splice Cover	Power Feed	Power Interrupting Section ♦	End Cover
PVC 160° F	Phase / Indoors (Orange)	50736-J	51377-J	50743-J	51322	38184	50758-J	33796B
	Phase & Ground / Outdoors UV Stable (Black)	50736B-J	51381-J	50743B-J	51322	38184	50758B-J	33796B
Poly - carbonate 250°F	Phase & Ground / Indoors & Outdoors (Red)	50735-J	51379-J	50817-J	31998	38184D	50759-J	33796B
Wt ib (kg)		85 (38.56)	2.8 lb/ft (0.3871 kg/m)	70 (31.75)	3.5 (1.59)	6.5 (2.95)	105 (47.63)	1.5 (0.68)
Length ft (kg)		30 (9.114)	*	20 (6.096)	/	/	30 (9.114)	/

♦ See Appendix IV Pgs. 63-64.

Hangers

Hangers can be installed on brackets up to 3/8” thick. Hangers with cross bolts can be used as anchors.



Polycarbonate Snap-In

1000 A Hangers	Plated Hardware	Stainless Steel Hardware	High Temp.	Wt ib (kg)
Polycarbonate Snap-In	23223	28220	N/A	0.28 (0.127)
Polycarbonate Snap-in w/insulator	24902	24902B	N/A	0.87 (0.395)
Stainless Steel Cross Bolt	25986	28374	51972	0.61 (0.277)
Stainless Steel Cross Bolt w/insulator	51971	32807	24973	1.16 (0.526)



Polycarbonate Snap-in w/Insulator



Stainless Steel Cross Bolt

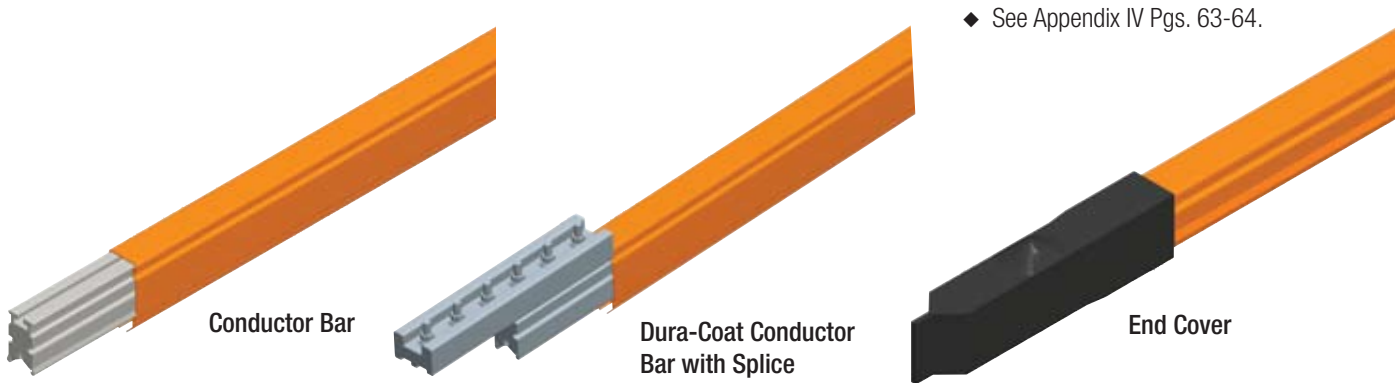


Stainless Steel Cross Bolt w/Insulator

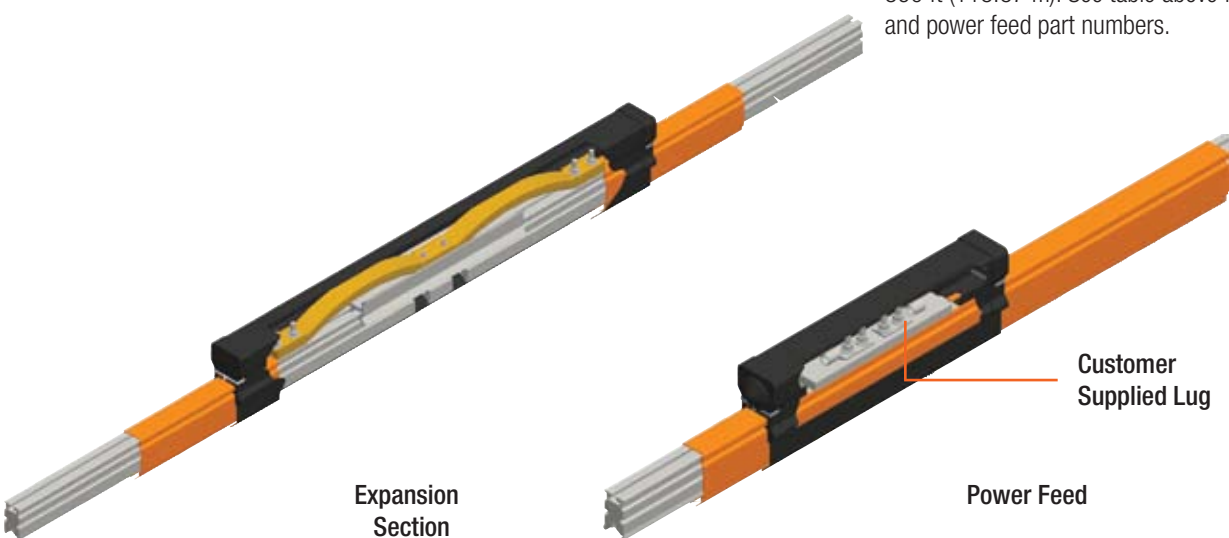
Hevi-Bar II - 1500A Conductors

Standard Conductor Bar and Components

Type / Max Temp.	Use (Color)	Conductor Bar	Conductor Bar Cut Lgth (Specify 5 to 29 ft)	Expansion Section	Splice	Power Feed	Power Interrupting Section ♦	End Cover
PVC 160° F	Phase / Indoors (Orange)	24000	24003	32820	38968	50227	50760	33796B
	Phase & Ground / Outdoors UV Stable (Black)	24000C	38944	38952	38968	50227	50760B	33796B
Poly - carbonate 250°F	Phase & Ground / Indoors & Outdoors (Red)	39296	39295	39287	34802	50227C	50756	33796B
Wt lb (kg)		110 (49.90)	3.6 lb/ft (0.4977 kg/m)	88 (39.92)	4.0 (1.81)	130 (58.97)	130.0 (58.97)	1.5 (0.680)
Length ft (m)		30 (9.114)	-	20 (6.10)	/	/	30 (9.114)	/



Expansion Sections and Power Feed



Hevi-Bar II - 1500A DURA-COAT & Hangers

DURA-COAT Conductor Bar & Components

The ideal option for highly corrosive environments. Splices are pre-installed on Dura-Coat conductors.

Type / Max Temp.	Use (Color)	Conductor Bar	Conductor Bar Cut Lgth (Specify 5 to 29 ft)	Expansion Section	Splice Cover	Power Feed	Power Interrupting Section ♦	End Cover
PVC 160° F	Phase / Indoors (Orange)	50734-J	51382-J	50742-J	51297	50227	50762-J	33796B
	Phase & Ground / Outdoors UV Stable (Black)	50734B-J	50230-J	50742B-J	51297	50227	50762B-J	33796B
Poly - carbonate 250°F	Phase & Ground / Indoors & Outdoors (Red)	39430-J	39430-J	50060-J	51297B	50227C	50763-J	33796B
Wt lb (m)		110 (49.90)	3.6 lb/ft (0.4977 kg/m)	88 (39.92)	4.0 (1.81)	130 (58.97)	130 (58.97)	1.5 (0.68)
Length ft (m)		30.0 (9.144)	-	20.0 (6.10)	/	/	30.0 (9.144)	/

♦ See Appendix IV Pgs. 63-64.

Hangers

Hangers can be installed on brackets up to 3/8" thick. Hangers with cross bolts can be used as anchors.



Polycarbonate Snap-In

1500 A Hangers	Plated Hardware	Stainless Steel Hardware	Wt lb (kg)
Polycarbonate Snap-In	23223	28220	0.28 (0.127)
Polycarbonate Snap-in w/insulator	24902	24902B	0.87 (0.395)
Stainless Steel Cross Bolt	25986	28374	0.61 (0.277)
Stainless Steel Cross Bolt w/insulator	51971	32807	1.16 (0.526)



Polycarbonate Snap-in w/insulator



Stainless Steel Cross Bolt

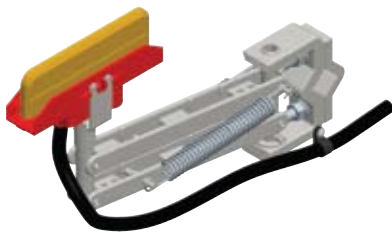


Stainless Steel Cross Bolt w/insulator

Hevi-Bar II Collectors & Replacement Shoes

All collectors include long-wearing copper graphite shoes (in holders) and “pigtail” wiring as noted below. For recommendations about choosing collectors, see Appendix I Pgs. 57-60.

125A Single Collector



21” long pigtails, 6 AWG, are supplied on the collector. Customer supplied wiring connects to the collector pigtail with in-line connectors. **Used on 500A conductor bar only.**

TYPE	Part No.	Wt lb (kg)
Standard Collector with Shoe.	30388	3.37 (1.529)
DURA-COAT Collector with Shoe.	50205	3.87 (1.755)
Replacement Shoe for Standard or DURA-COAT	30516	1.00 (0.454)

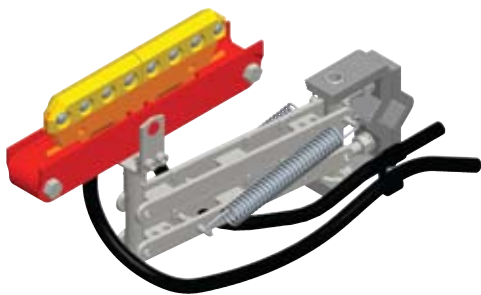
250A Tandem Collector



21” long pigtails, 6 AWG, are supplied on the collector. Customer supplied wiring connects to the collector pigtail with in-line connectors. **Used on 500A conductor bar only.**

TYPE	Part No.	Wt lb (kg)
Standard Collector with Shoe.	30389	6.39 (2.898)
DURA-COAT Collector with Shoe.	39752	7.39 (3.352)
Replacement Shoe for Standard or DURA-COAT (Two required per collector)	30516	1.00 (.454)

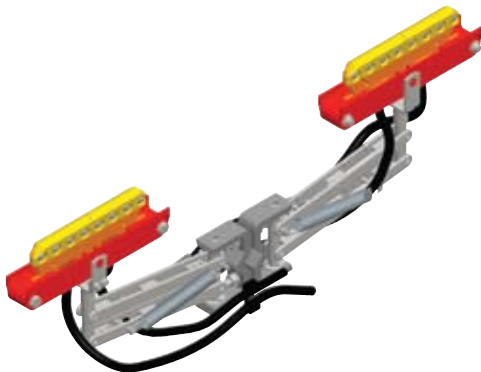
200A Single Collector



42” long pigtails, 2 AWG, are supplied on the collector. Customer supplied wiring connects to the collector pigtail with in-line connectors. **Used on 700A - 1500A conductor bar only.** Note that the 300A version is the same as the 200A, except with an extra tension spring on the arm.

TYPE	Part No.	Wt lb (kg)
Standard Collector with Shoe.	24060	6.87 (3.116)
DURA-COAT Collector with Shoe.	51522	7.37 (3.343)
300A Standard Collector with Shoe.	24060Q	7.47 (3.388)
Replacement Shoe for Standard & DURA-COAT	11417X	0.38 (0.172)

400A Tandem Collector



42” long pigtails, 2 AWG, are supplied on the collector. Customer supplied wiring connects to the collector pigtail with in-line connectors. **Used on 700A - 1500A conductor bar only.** Note that the 600A version is the same as the 400A, except with one extra tension spring on each arm.

TYPE	Part No.	Wt lb (kg)
Standard Collector with Shoe.	24061	13.40 (6.078)
DURA-COAT Collector with Shoe.	39848	13.90 (6.305)
600A Standard Collector with Shoe.	24061B	14.10 (51.75)
Replacement Shoe for Standard & DURA-COAT (Two required per collector)	11417X	0.38 (0.172)

Hevi-Bar II 500A Support Brackets

The Hevi-Bar II Support Brackets listed below are for 500A conductors. They are available in three types as listed below and can be ordered in five different configurations:

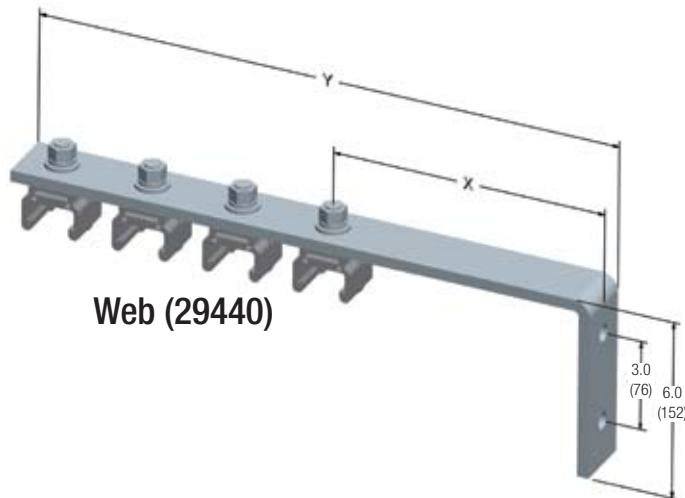
- Bracket only (no hangers included)
- Bracket with four pre-installed hangers - standard Polycarbonate
- Bracket with four pre-installed hangers - standard Polycarbonate w/insulators
- Bracket with four pre-installed hangers - stainless steel cross-bolt
- Bracket with four pre-installed hangers - stainless steel cross-bolt w/insulators

All holes to accept hangers are 3" on-center and .56" diameter (to accept 3/8" diameter hanger bolts).

Web Bracket

Mounts to vertical web of beam. Bracket is 2 1/2" wide by 3/8" thick.

Bracket Finish	Dim X inches (mm)	Dim Y inches (mm)	Part No. <u>Bracket Only</u>	Wt lb (kg)	Part Nos. - With Four Hangers Pre-Installed			
					Standard Polycarbonate	Standard Polycarbonate w/Insulators	Stainless Steel Cross-Bolt	Stainless Steel Cross-Bolt w/Insulator
Plated Steel	6.0 (152)	16.25 (413)	29441	4.6 (2.087)	29440	29440B	29440C	29440D
Plated Steel	9.0 (229)	19.25 (489)	30503	5.2 (2.359)	51785	51785B	51785C	51785D
Plated Steel	11.0 (279)	21.25 (540)	33655	5.5 (2.495)	38268	38268B	38268C	38268D
Stainless Steel	9.0 (229)	19.25 (489)	35337	5.2 (2.359)	51786	51786B	51786C	51786D
Hot Dip Galv.	9.0 (229)	19.25 (489)	30697	5.2 (2.359)	34814	34814B	34814C	34814D



Web (29440)



Flange (30493)

Flange Bracket

Mounts to top flange of beam. Bracket is a 2"x 2" angle, by 3/8" thick. The first hole is 1 1/4" from the end.

Bracket Finish	Dim X inches (mm)	Dim Y inches (mm)	Part No. <u>Bracket Only</u>	Wt lb (kg)	Part Nos. - With Four Hangers Pre-Installed			
					Standard Polycarbonate	Standard Polycarbonate w/Insulators	Stainless Steel Cross-Bolt	Stainless Steel Cross-Bolt w/Insulator
Plated Steel	13.25 (337)	23.50 (597)	30529	8.8 (3.992)	30493	30493B	30493C	30493D

Hevi-Bar II 700A-1000A-1500A Support Brackets

The Hevi-Bar II Support Brackets listed below are for 700A, 1000A, or 1500A conductors. They are available in three types as listed below, and can be ordered in five different configurations:

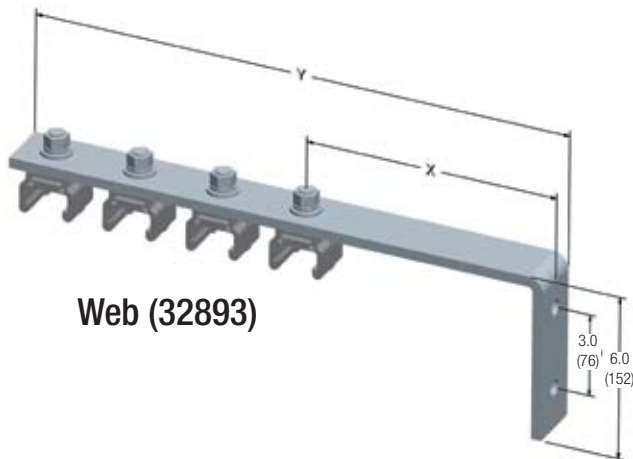
- Bracket only (no hangers included)
- Bracket with four pre-installed hangers - standard Polycarbonate
- Bracket with four pre-installed hangers - standard Polycarbonate w/insulators
- Bracket with four pre-installed hangers - stainless steel cross-bolt
- Bracket with four pre-installed hangers - stainless steel cross-bolt w/insulators

All holes to accept hangers are 3" on-center and .56" diameter (to accept 3/8" diameter hanger bolts).

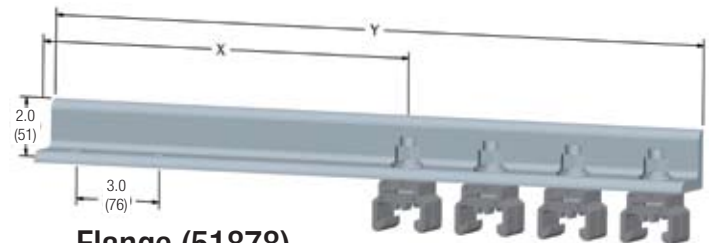
Web Bracket

Mounts to vertical web of beam. Bracket is 2 1/2" wide by 3/8" thick.

Bracket Finish	Dim X Inches (mm)	Dim Y Inches (mm)	Part No. Bracket Only	Wt (lb)	Part No. - With Four Hangers Pre-Installed			
					Standard Polycarbonate	Standard Polycarbonate w/Insulators	Stainless Steel Cross-Bolt	Stainless Steel Cross-Bolt w/Insulator
Plated Steel	6.0 (152)	16.25 (413)	29441	4.6	32893	32893B	32893C	32893D
Plated Steel	9.0 (229)	19.25 (489)	30503	5.2	39923	39923B	39923C	39923D
Stainless Steel	9.0 (229)	19.25 (489)	35337	5.2	51788	51788B	51788C	51788D
Hot Dip Galv.	9.0 (229)	19.25 (489)	30697	5.2	32932	32932B	32932C	32932D



Web (32893)



Flange (51788)

Flange Bracket

Mounts to top flange of beam. Bracket is a 2"x 2" angle, by 3/8" thick. The first hole is 1 1/4" from the end.

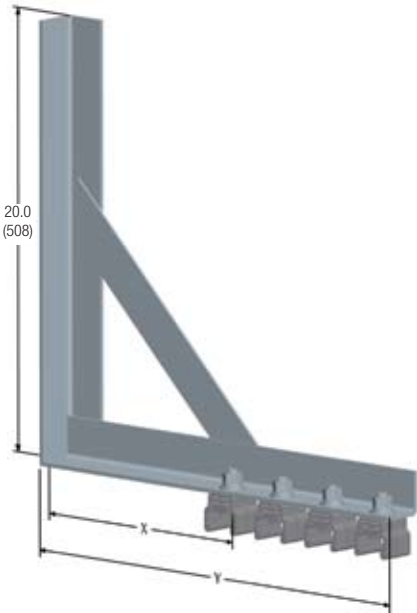
Bracket Finish	Dim X Inches (mm)	Dim Y Inches (mm)	Part No. Bracket Only	Wt (lb)	Part Nos. - With Four Hangers Pre-Installed			
					Standard Polycarbonate	Standard Polycarbonate w/Insulators	Stainless Steel Cross-Bolt	Stainless Steel Cross-Bolt w/Insulator
Plated Steel	13.25 (337)	23.50 (597)	30529	8.9	51878	51878B	51878C	51878D

Hevi-Bar II 700A-1000A-1500A Support Brackets

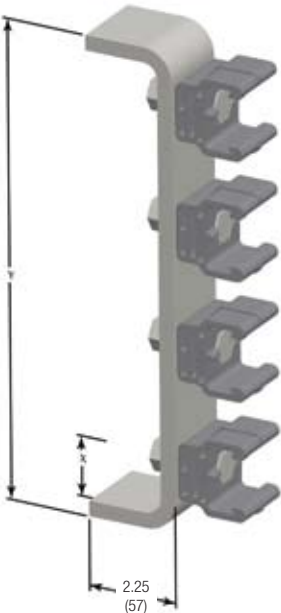
Braced Web Bracket

Single-iron weldment, used for heavier conductor bar (e.g. 1500A)

					Part Nos. - With Four Hangers Pre-Installed			
Bracket Finish	Dim X Inches (mm)	Dim Y Inches (mm)	Part No. <u>Bracket Only</u>	Wt (lb)	Standard Polycarbonate	Standard Polycarbonate w/Insulators	Stainless Steel Cross-Bolt	Stainless Steel Cross-Bolt w/Insulator
Plated Steel	11.0 (279)	21.0(533)	25720	3.3	25691	25691B	25691C	25691D



Braced Web (25691)



Lateral (51876)

Lateral Bracket

Mounts to vertical web of beam to configure conductor bar one above the other. Bracket is 2 1/2" wide by 3/8" thick.

					Part Nos. - With Four Hangers Pre-Installed			
Bracket Finish	Dim X Inches (mm)	Dim Y	Part No. <u>Bracket Only</u>	Wt (lb)	Standard Polycarbonate	Standard Polycarbonate w/Insulators	Stainless Steel Cross-Bolt	Stainless Steel Cross-Bolt w/Insulator
Plated Steel	1.50 (38)	12.0 (305)	50498	3.2	51876	51876B	51876C	51876D

Hevi-Bar II Specifications

Conductor Bar Cover

	Cover Type:				
	Standard (Ground)	UV Resistant	Medium Heat	Hi Heat*	Bare Bar
Material	PVC	PVC	Lexan Polycarbonate	Fiberglass Reinforced	N/A
Color	Orange (Green)	Black	Red	Orange	no color
Normal Ambient	-40°F to 104°F -40°C to 40°C	-40°F to 104°F -40°C to 40°C	-40°F to 200°F -40°C to 93.3°C	-40°F to 345°F -40°C to 173.8°C	-40°F to 690°F -40°C to 365.5°C
Max. Temperature	160°F (71.1°C)	160°F (71.1°C)	250°F (121.1°C)	400°F (204.4°C)	750°F (398.8°C)
Material	PVC	PVC	Lexan Polycarbonate	Fiberglass	N/A
Dielectric Strength	450 volts/mil	450 volts/mil	600 volts/mil	200 volts/mil	N/A
Volume Resistivity	>10 ¹² (Ω/mil)	>10 ¹² (Ω/mil)	>10 ¹³ (Ω/mil)	>10 ¹¹ (Ω/mil)	N/A
Flame Test	Self Extinguishing	Self Extinguishing	Self Extinguishing	Self Extinguishing	N/A
Specific Density	1.5 g/cm ³	1.5 g/cm ³	1.15 g/cm ³	1.24 g/cm ³	N/A

* 700A and 1000A only

Conductor Bar

	Nominal Current of Bar:			
	500A	700A	1000A	1500A
Cross Sectional Area, in. (mm)	0.45 (11.4)	0.70 (17.8)	1.05 (26.7)	2.29 (58.2)
AC & DC Voltage	600	600/4160	600/4160	600/4160
DC Resistance at 20°C (Ω/ft.)	3.27 x 10 ⁻⁵	2.11 x 10 ⁻⁵	1.41 x 10 ⁻⁵	0.64 x 10 ⁻⁵
Phase Corrected Impedance Z at 20°C (Ω/ft.)	5.40 x 10 ⁻⁵	4.21 x 10 ⁻⁵	3.39 x 10 ⁻⁵	2.28 x 10 ⁻⁵
Conductor Length, ft. (m)	30.0 (9.1)	30 feet (9.1)	30 feet (9.1)	30 feet (9.1)
Support Spacing, ft. (m)	5 (1.52)	7.5 (2.28)	10 (3.05)	10 (3.05)
Spacing between Conductors, in. (mm)	3.0 (76.2)	3.0 (76.2)	3.0 (76.2)	3.0 (76.2)
Expansion Sections not required for runs less than: ft. (m)	390 (11.9)	390 (11.9)	390 (11.9)	390 (11.9)
Minimum Bending Radius, ft. (m)	8.0 (2.4)	10.0 (3.05)	12.0 (3.7)	15.0 (4.6)

Corrosion Protection

Hardware Type:	Duty
Zinc Plated	Moderate
Stainless Steel	Severe
DURA-COAT	Extreme Duty

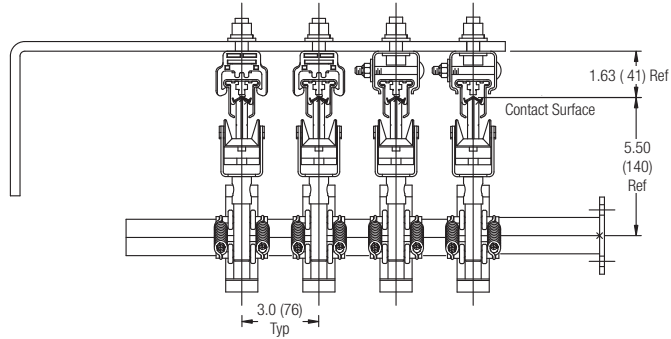
Available Accessories (Contact Conductix-Wampfler)

- Thermostatically controlled heater wire system, for ice and snow environments (500A only)
- Transfer Caps for switches
- Pick-up Guides for discontinuous systems
- Vertical and horizontal curves

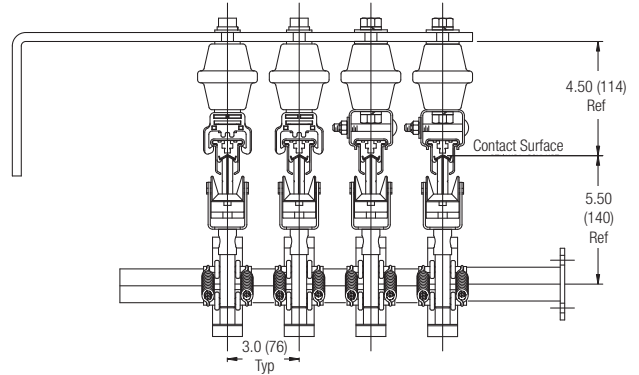
The appropriate conductor bar can be chosen only when all the relevant factors are known. Please refer to the Specification Data Sheet on Pg. 6, and to Appendices I through IV at the back of this catalog. Also, please consult Conductix-Wampfler Sales if you have any questions about the suitability of this product to your application.

Hevi-Bar II Installed Dimensions

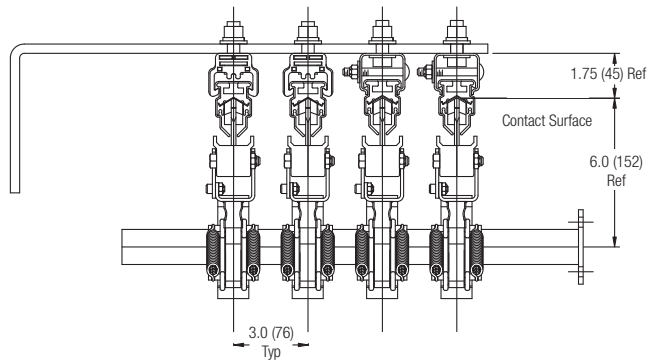
500A - Standard Hanger



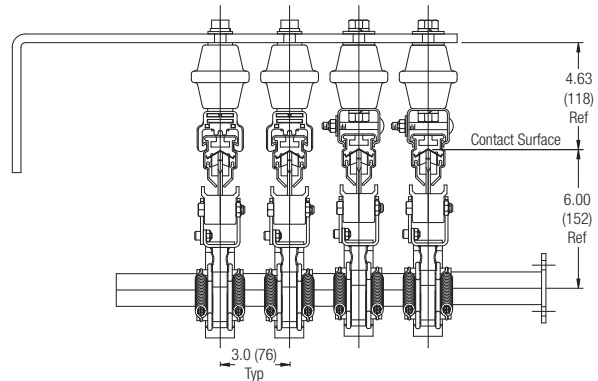
500A - with Insulators



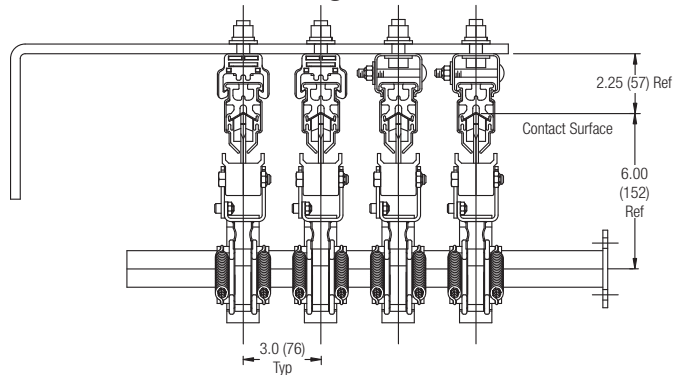
700A - Standard Hangers



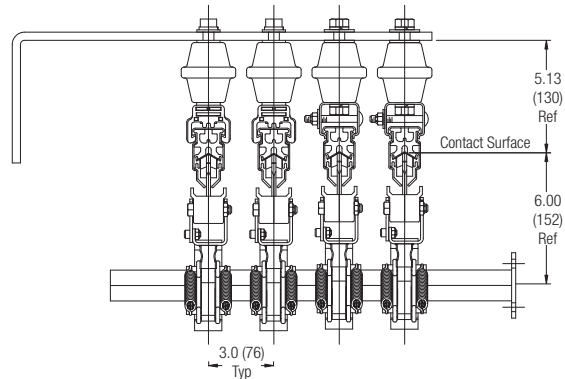
700A - with Insulators



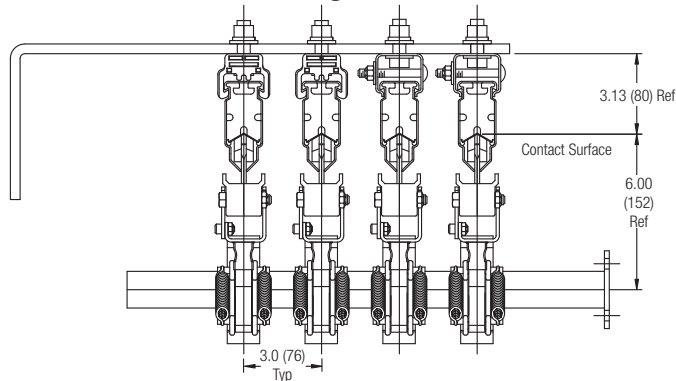
1000A - Standard Hangers



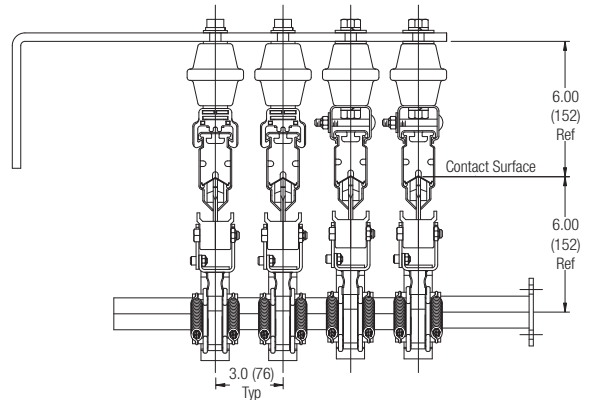
1000A - with Insulators



1500A - Standard Hangers

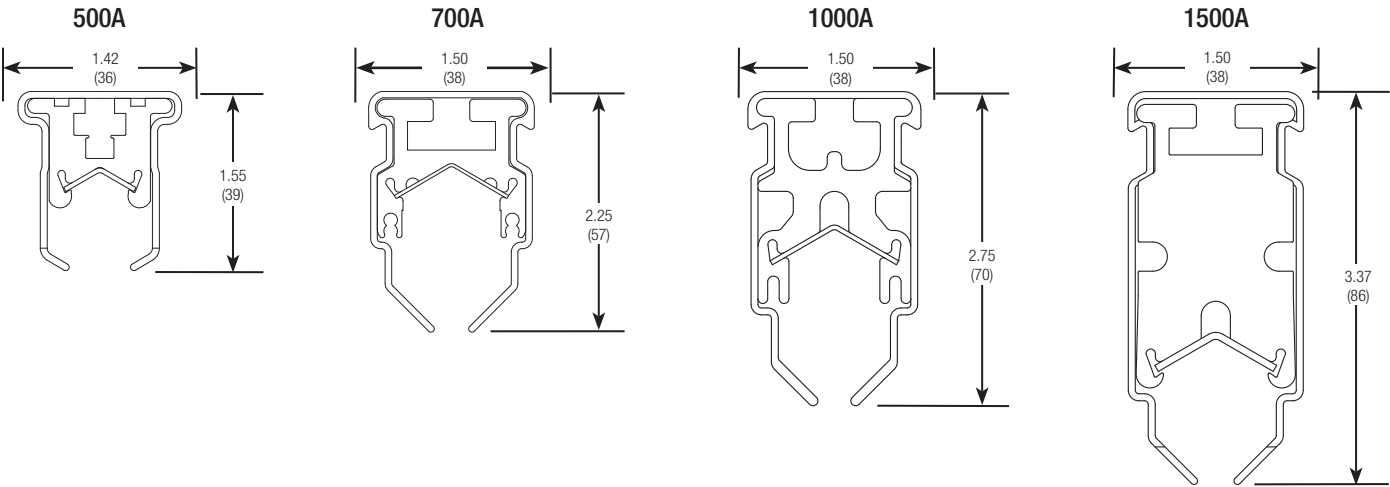


1500A - with Insulators

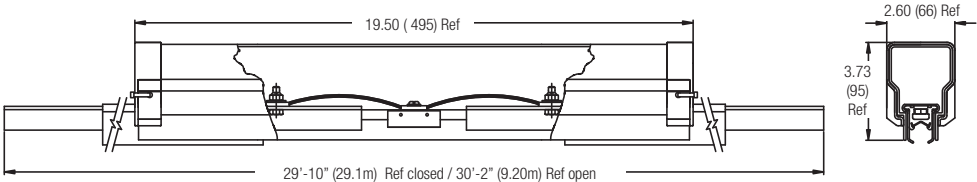


Hevi-Bar II Bar & Expansion Dimensions

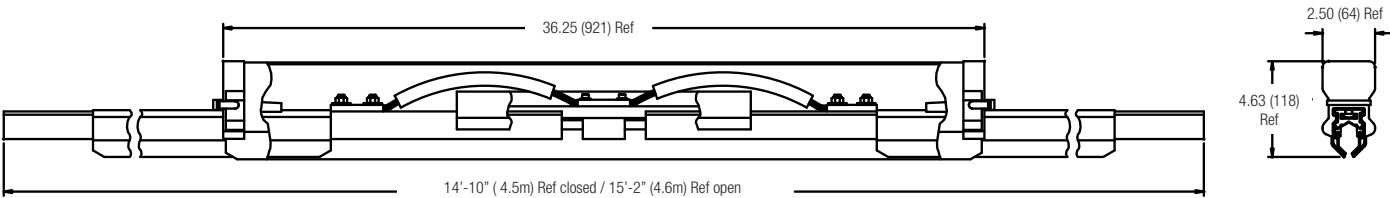
Bar Profiles



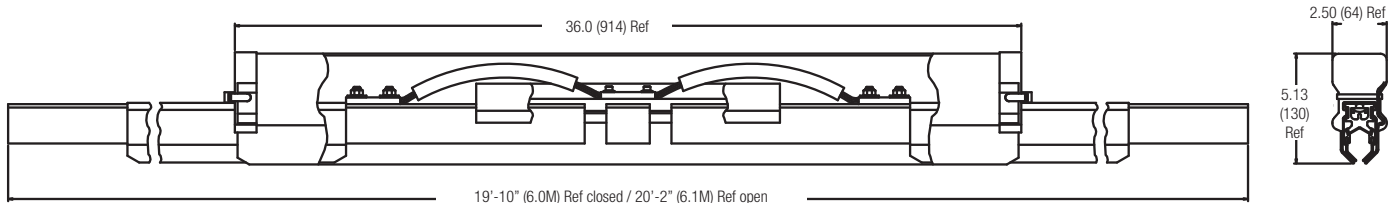
500A Expansion Section (37677)



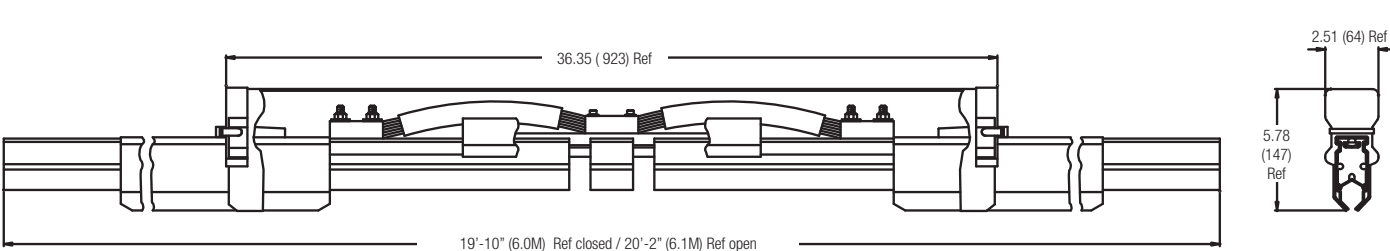
700A Expansion Section (50739)



1000A Expansion Section (23512)

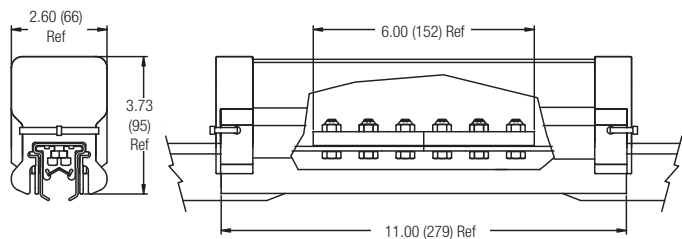


1500A Expansion Section (32820)

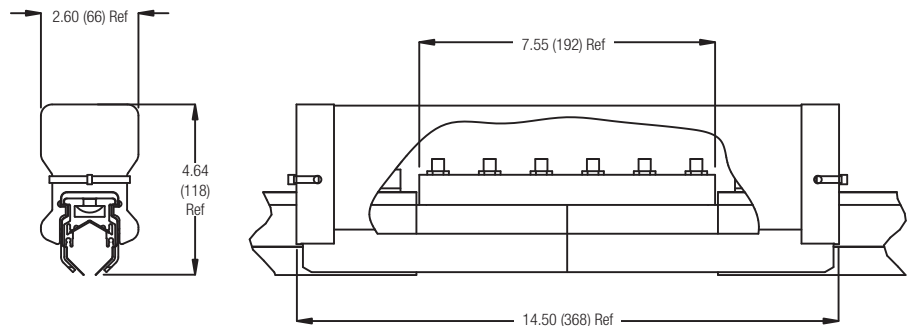


Hevi-Bar II Splice Dimensions

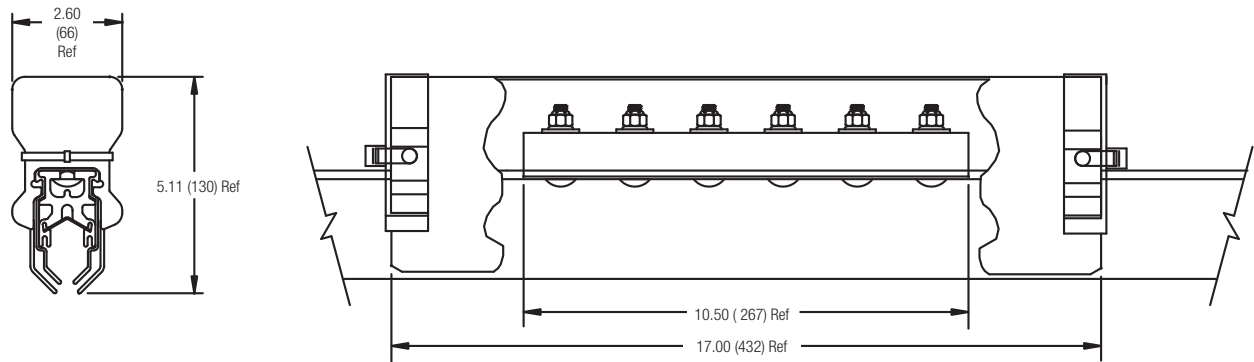
500A Splice (37676), 1/4" Bolts, Torque to 6 - 8 ft-lb



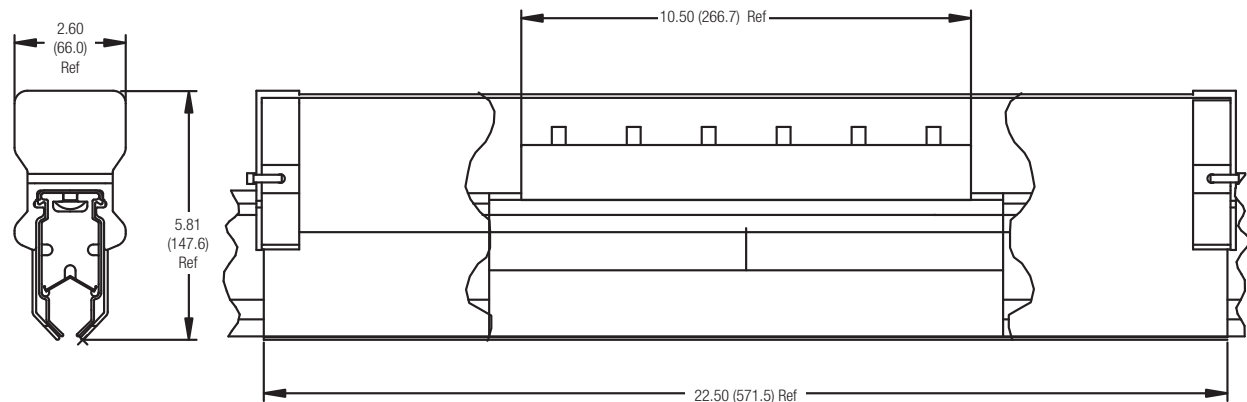
700A Splice (38115), 5/16" Bolts, Torque to 10 - 11 ft-lb



1000A Splice (37746), 5/16" Bolts, Torque to 10 - 11 ft-lb

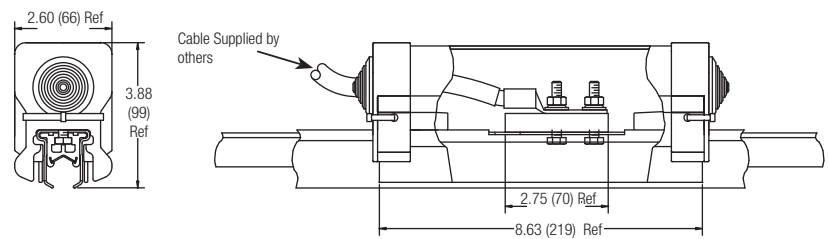


1500A Splice (38968), 5/16", Torque to 10 - 11 ft-lb

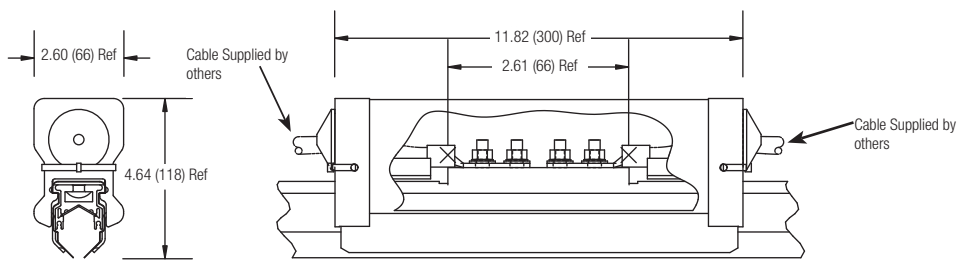


Hevi-Bar II Power Feed Dimensions

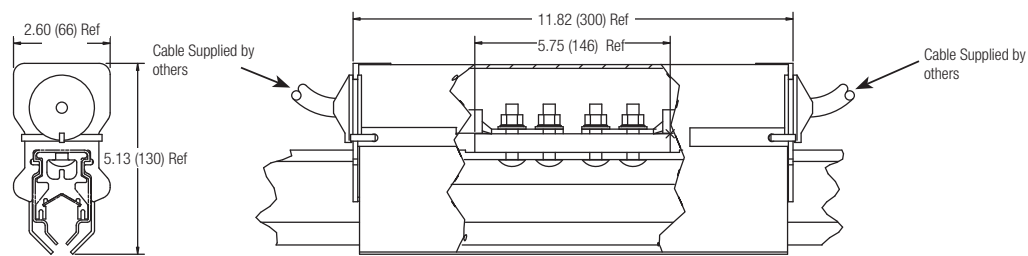
500A Power Feed (37674), 1/4" Bolts on 1" Centers, 6 -8 ft-lb



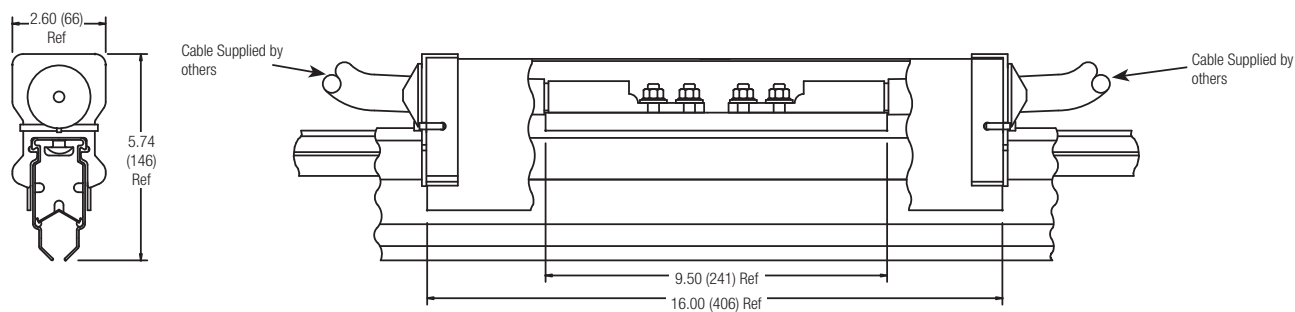
700A Power Feed (38117), 5/16" Bolts on 1" Centers, 10 - 11 ft-lb



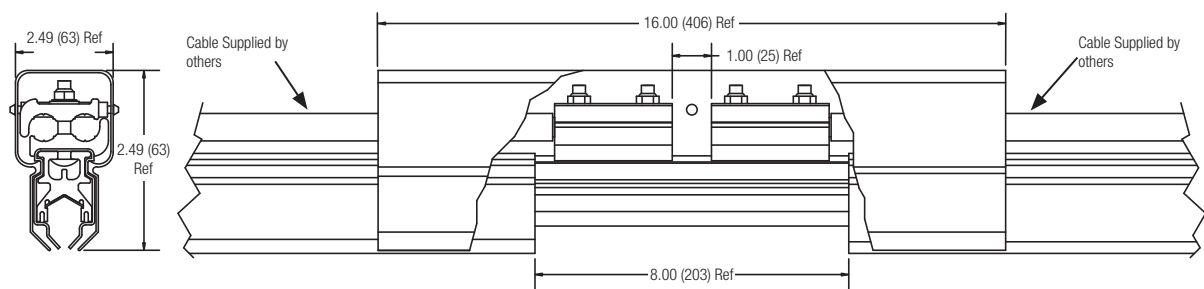
1000A Power Feed (38184), 5/16" Bolts on 1" Centers, 10 - 11 ft-lb



1500A Power Feed (50227), 5/16" Bolts on 1" Centers, 10 - 11 ft-lb

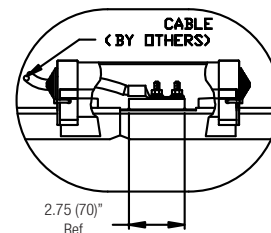
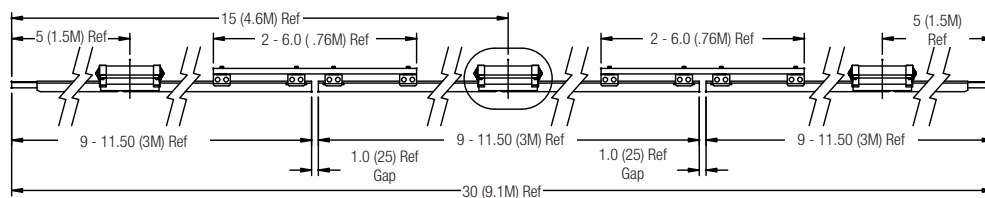


1500A Power Feed (28470), 5/16" Bolts on 1" Centers, 20 ft-lb

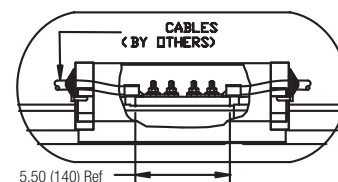
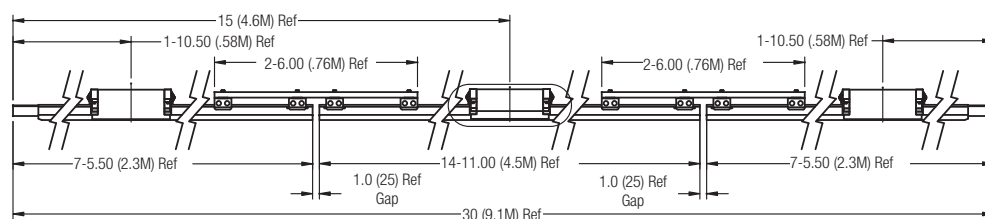


Hevi-Bar II Power Interrupting Section Dimensions

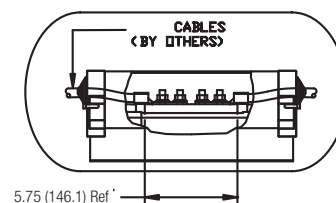
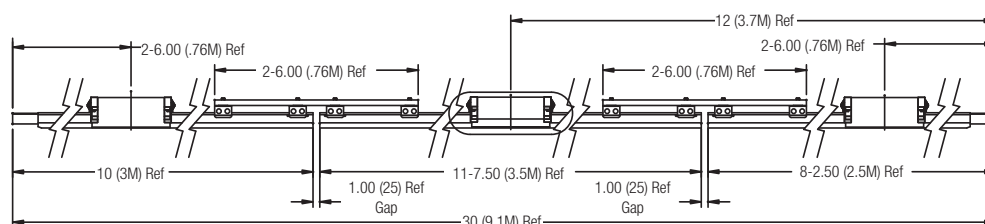
500A Power Interrupting Section (50746)



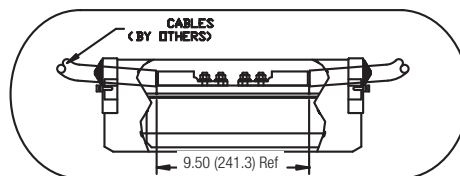
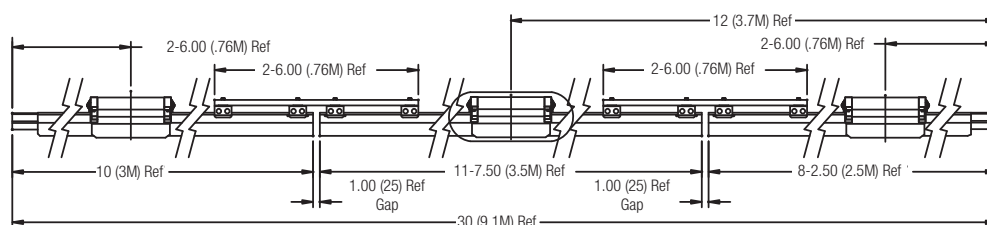
700A Power Interrupt (50748)



1000A Power Interrupt (50755)

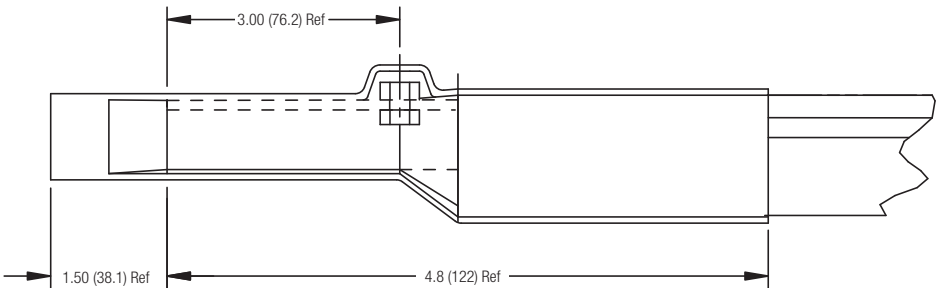


1500A Power Interrupt (50760)

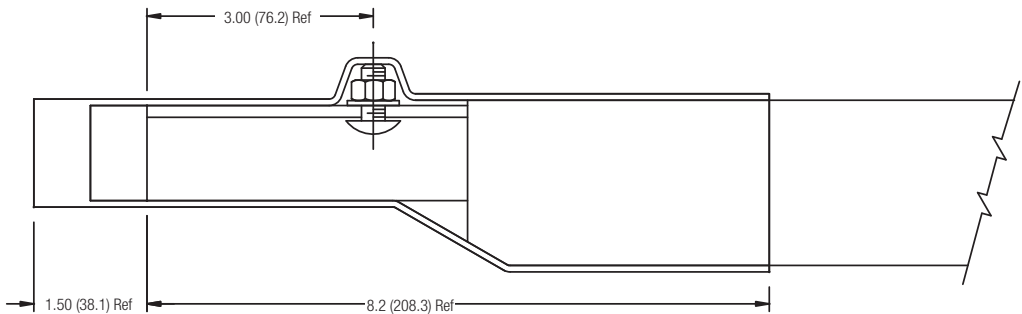


Hevi-Bar II End Cover Dimensions

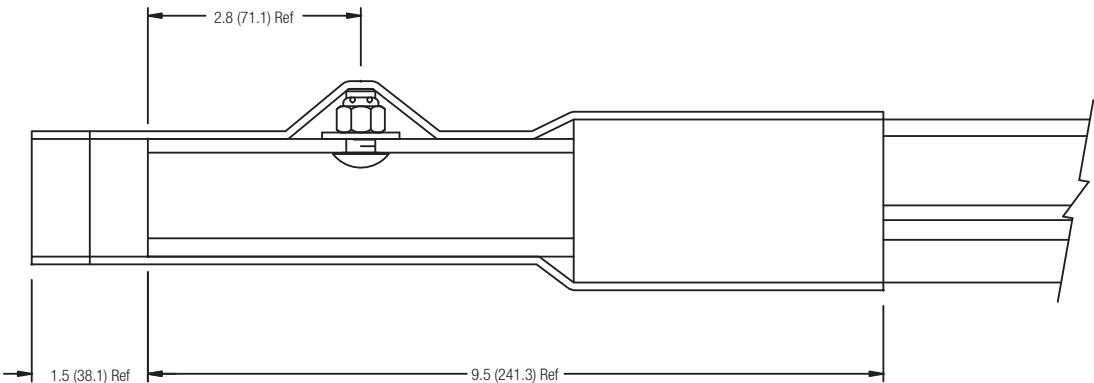
500A End Cover (27588)



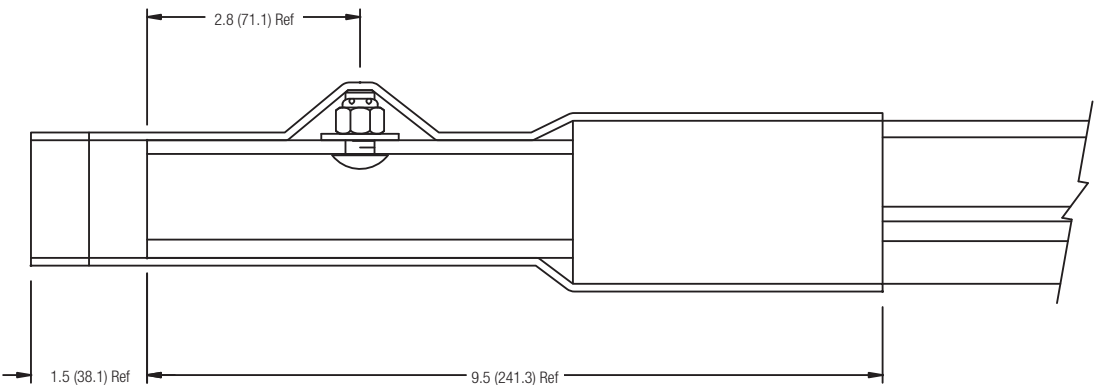
700A End Cover (50859)



1000A End Cover (33796B)

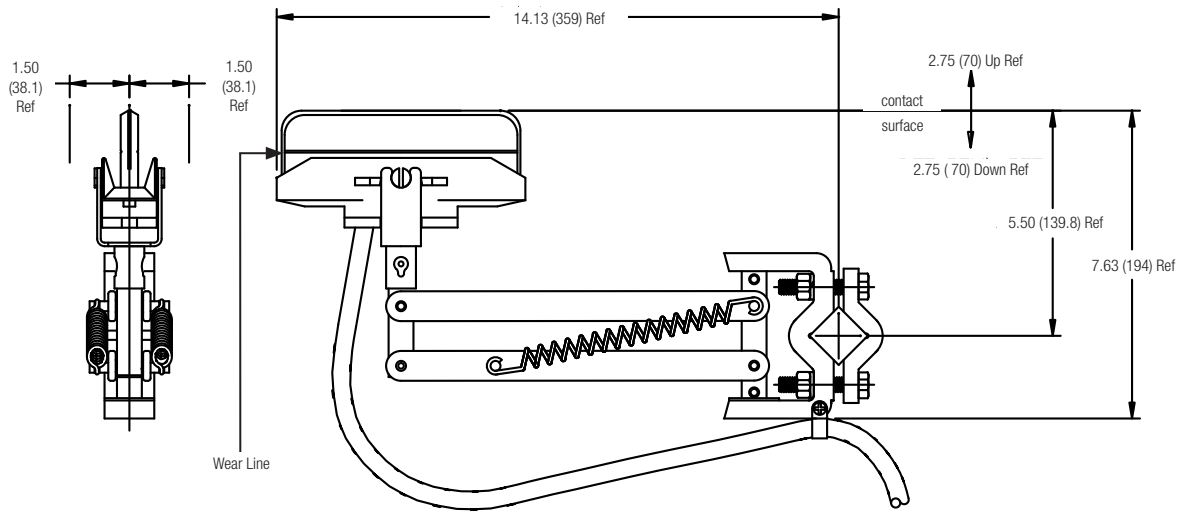


1500A End Cover (33796B)

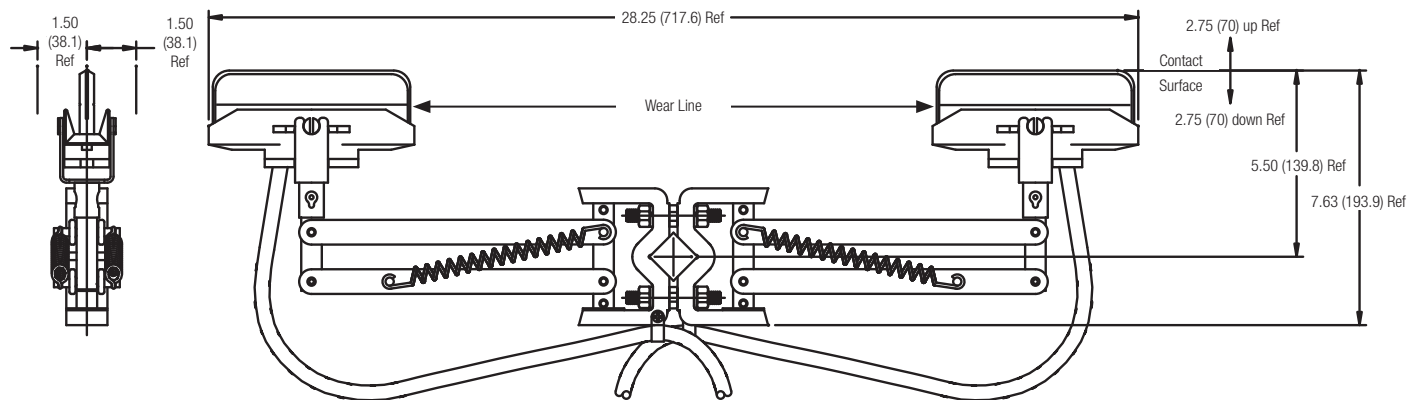


Hevi-Bar II Collector Dimensions

125A Single Collector * (30388/50205)



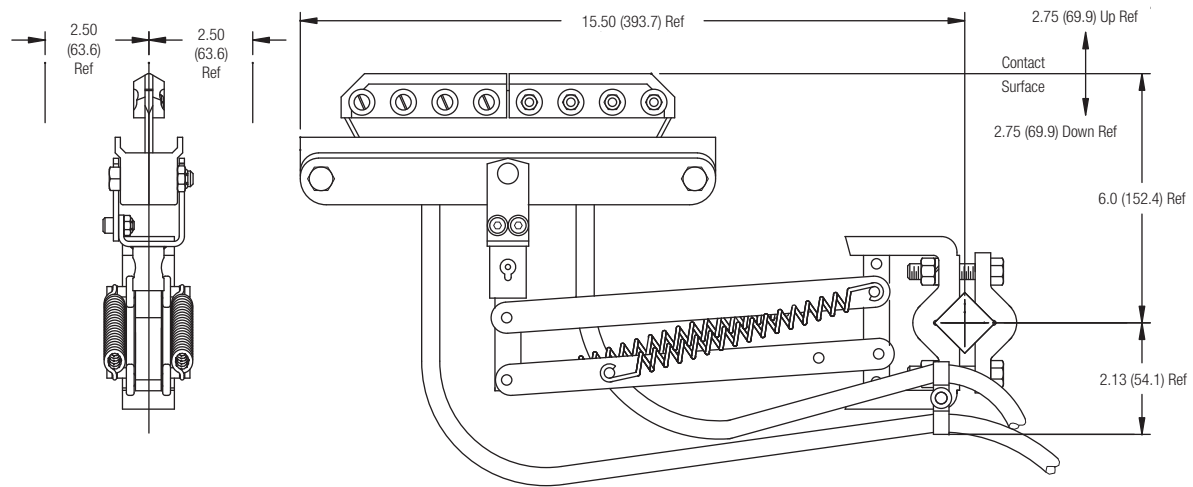
250A Tandem Collector * (30389/39752)



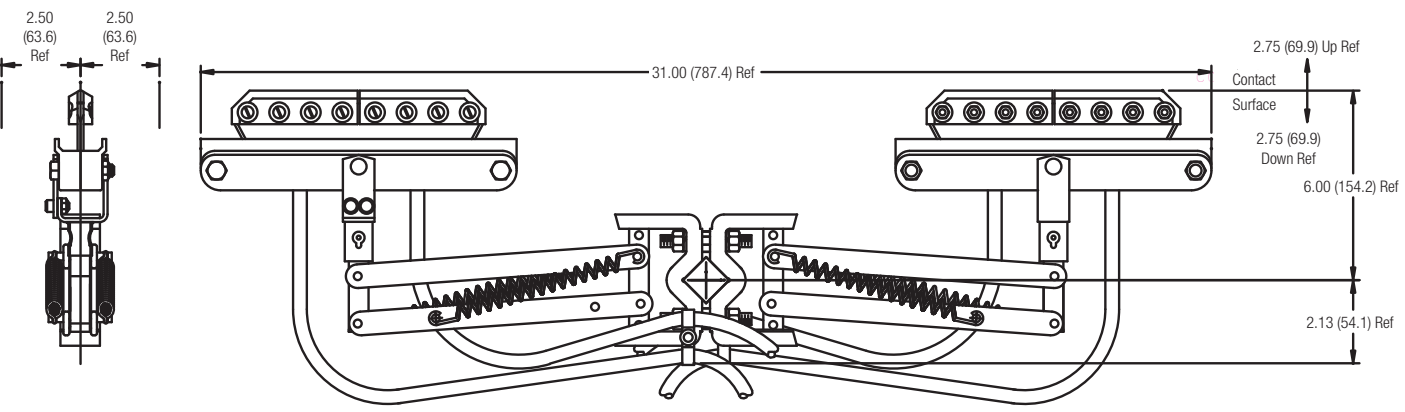
*** Only for use with 500A Conductor Bar**

Hevi-Bar II Collector Dimensions

200A & 300A Single Collector (24060 / 51522 / 24060Q)



400A & 600A Tandem Collector (24061 / 39848 / 24061B)



* Only for use with 700A, 1000A & 1500A Conductor Bar